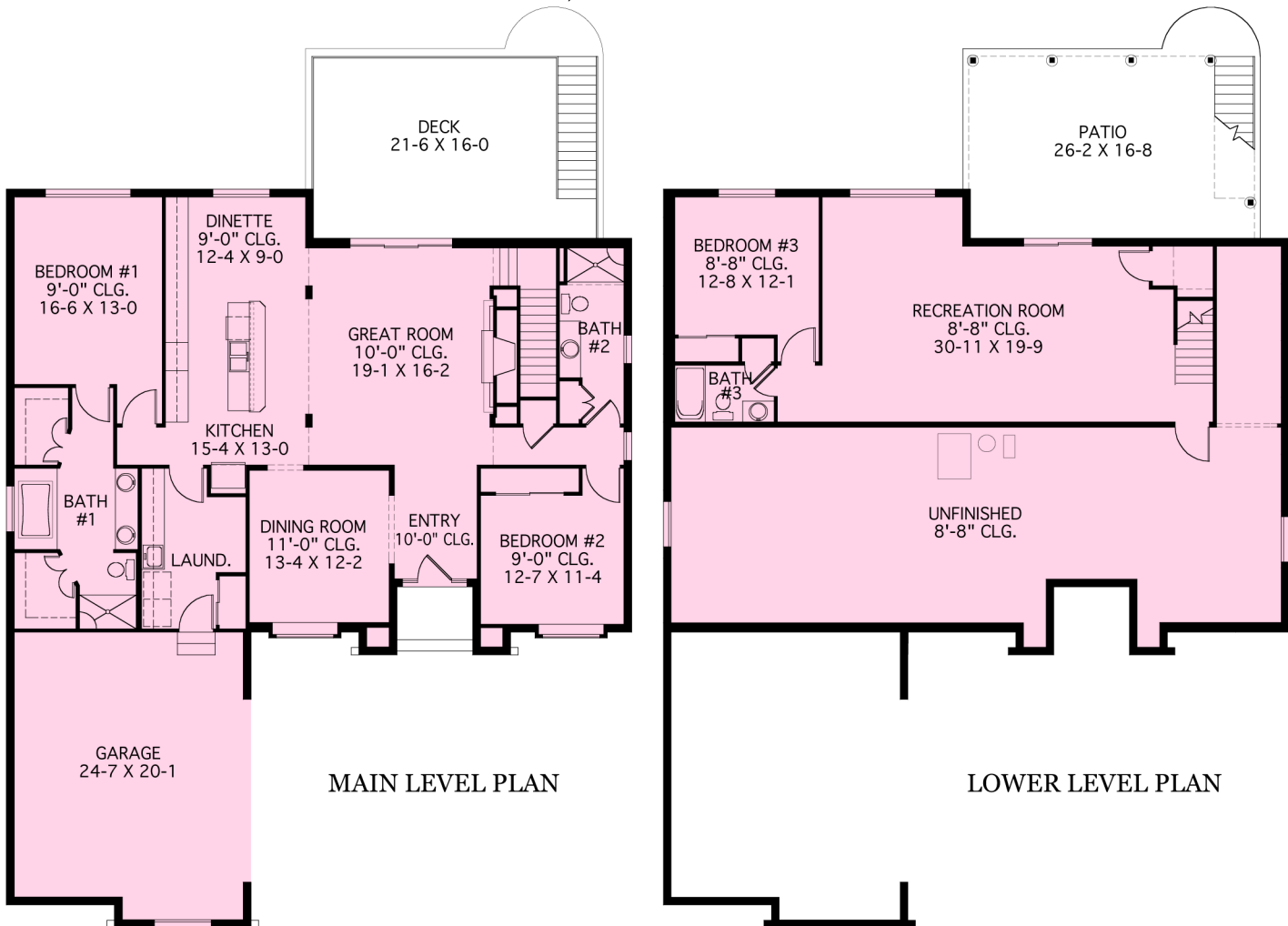


Rosecliff - Walkout Option # 3

MAIN LEVEL LIVING AREA - 2,010 SF • LOWER LEVEL LIVING AREA - 911 SF
 TOTAL LIVING AREA - 2,921 SF
 UNFINISHED AREA - 1,099 SF • GARAGE AREA - 530 SF



ZENGEL CONSTRUCTION COMPANY

2431 Vienna Parkway • Dayton, Ohio 45459 • 937-433-1748